

RustDesk New client install or Upgrade.

Method one AUTO

Windows Script AUTO

The below script is for RustDesk Client for **NEW install** or **UPGRADE** or **configuring settings**.

Open a **Powershell as Administrator** and then copy / paste and run with the below command.

Run in **Powershell as Administrator** :

```
Set-ExecutionPolicy -ExecutionPolicy Bypass -Scope Process -Force; Invoke-Expression (Invoke-WebRequest -Uri "https://docs.greenhome.stream/attachments/21" -UseBasicP) | Out-Null
```

Done.

Method two MANUAL

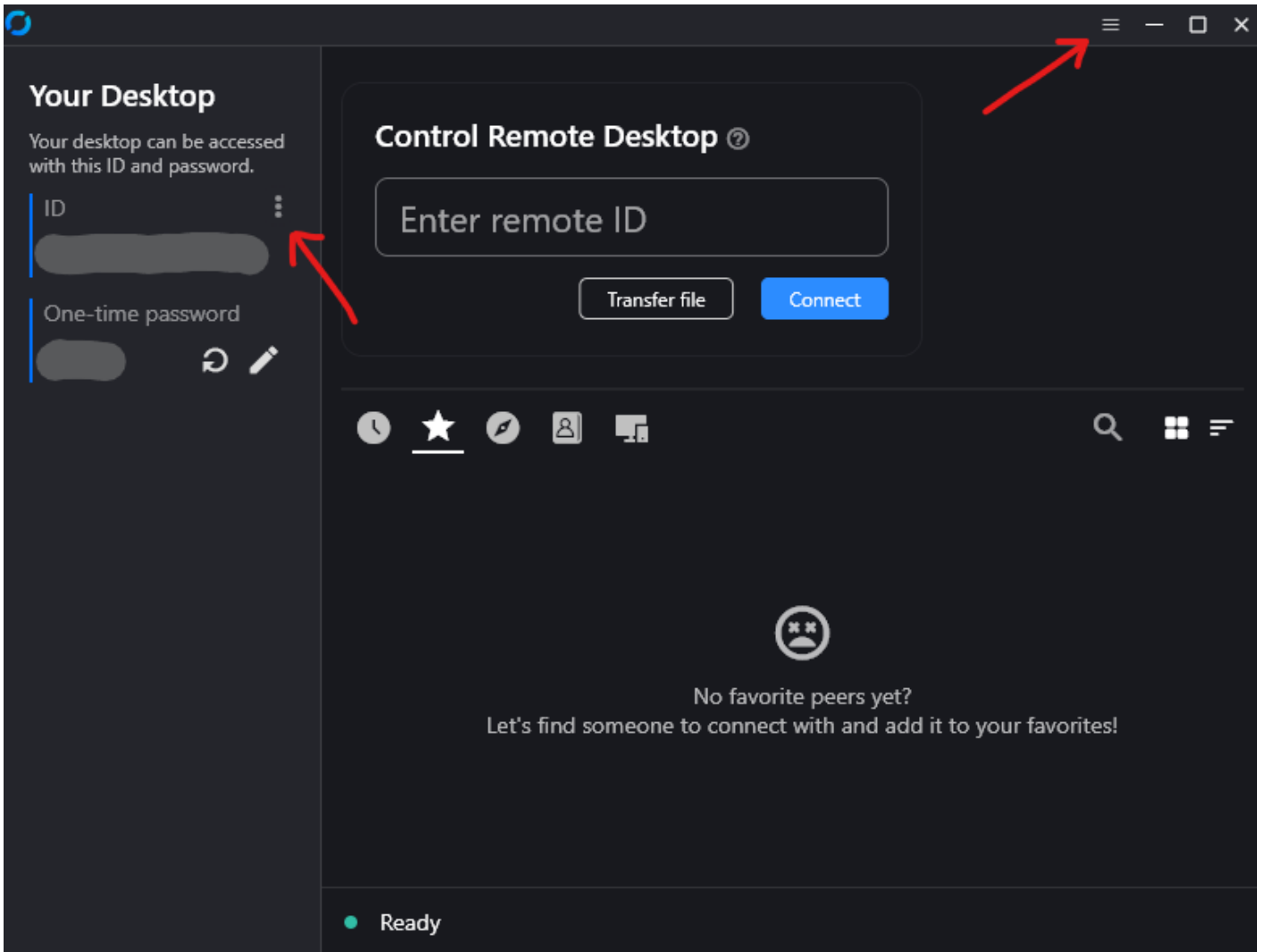
First install the Rustdesk client from the below official link.

<https://rustdesk.com/download>

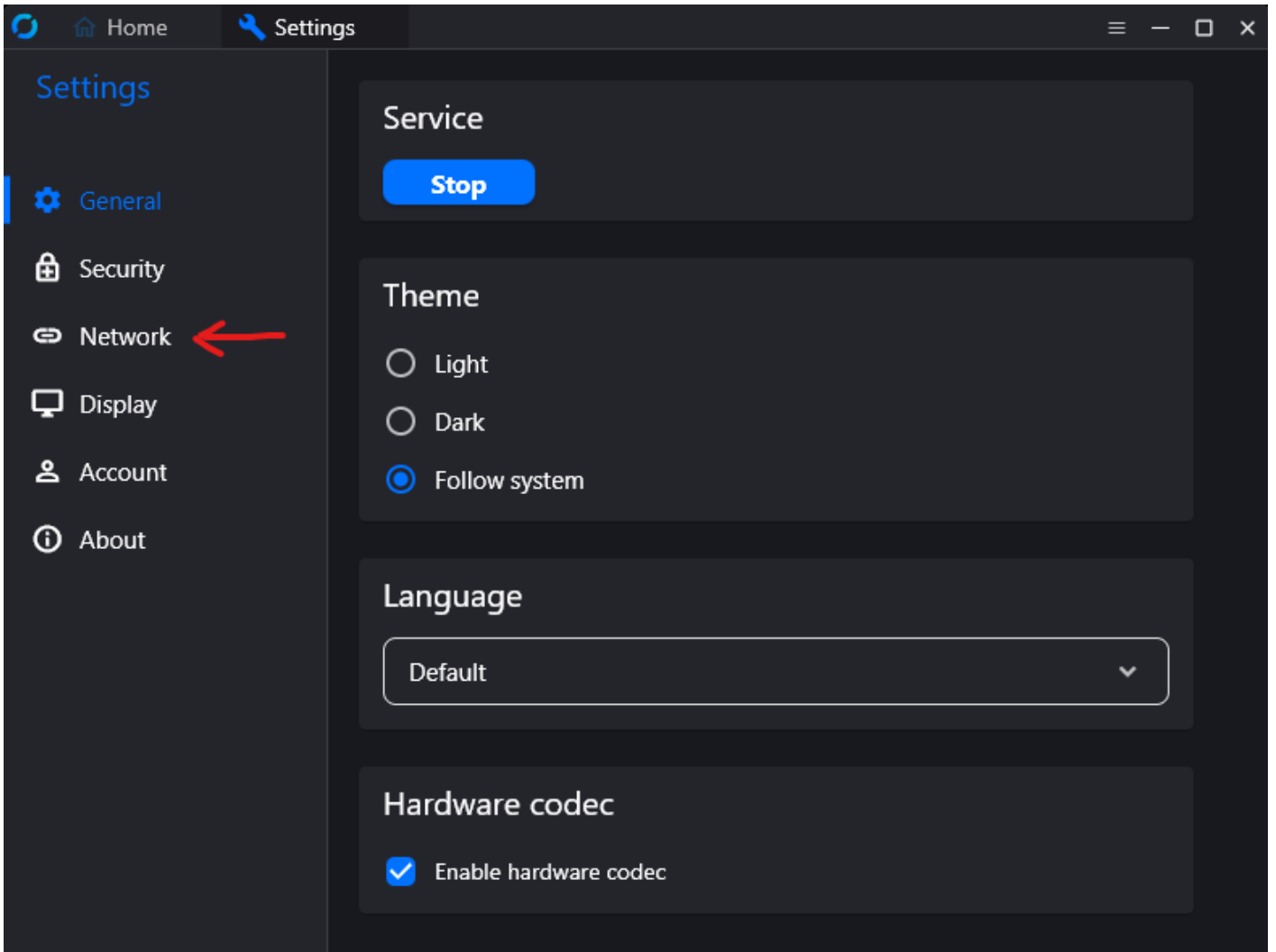
Windows guide setup.

To import the settings for ID/Relay follow the steps below.

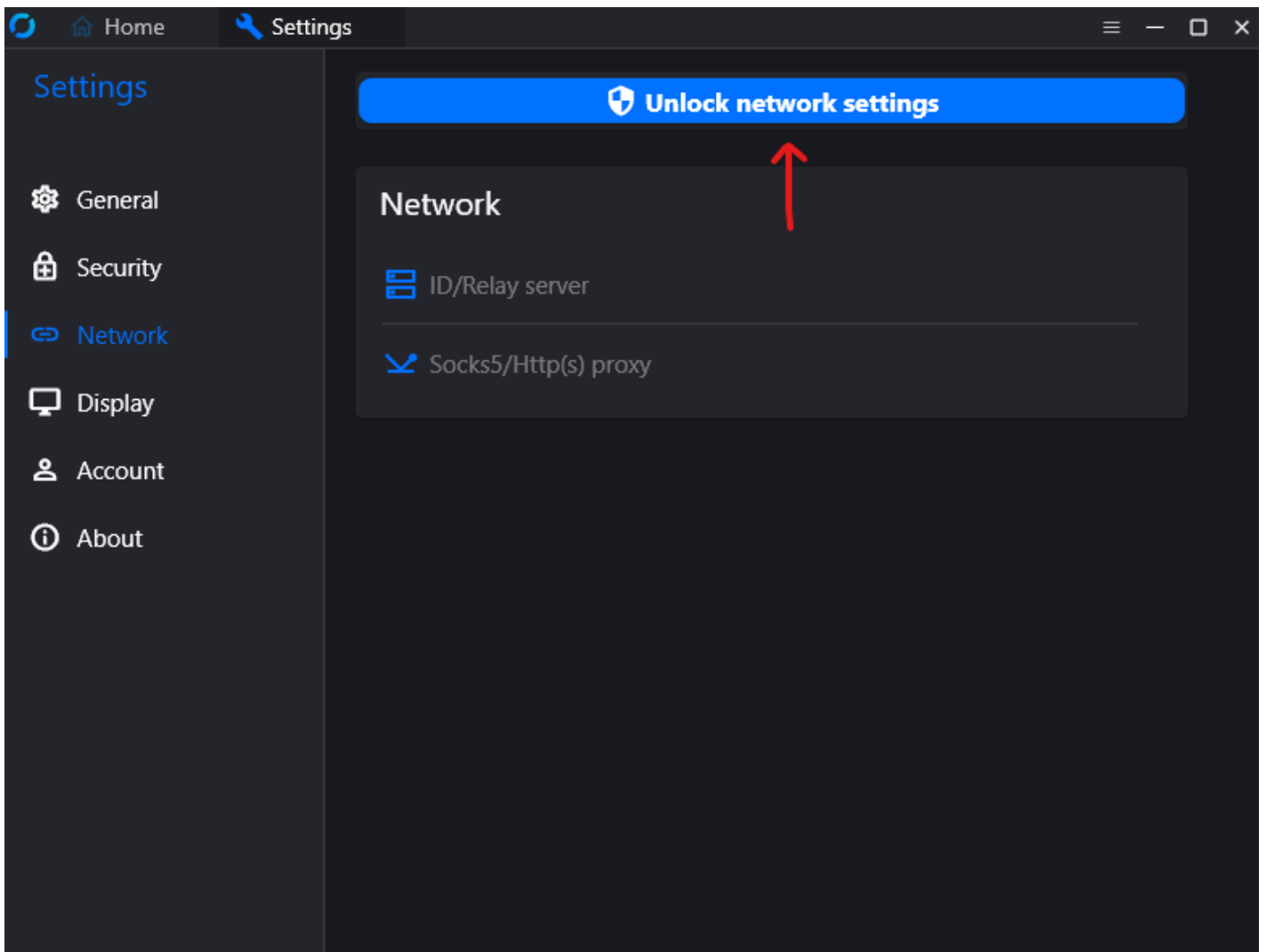
Step 1



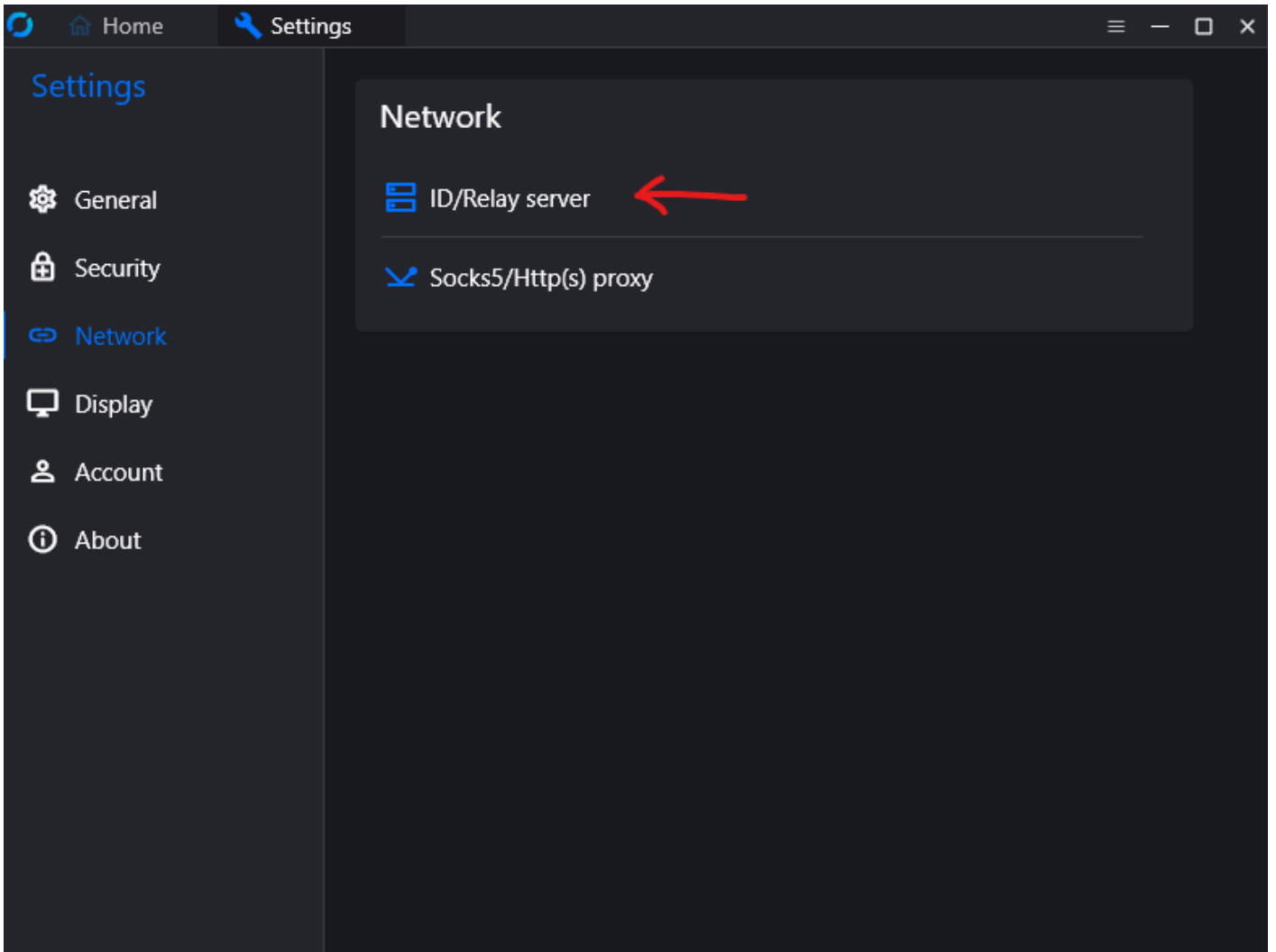
Step 2



Step 3



Step 4

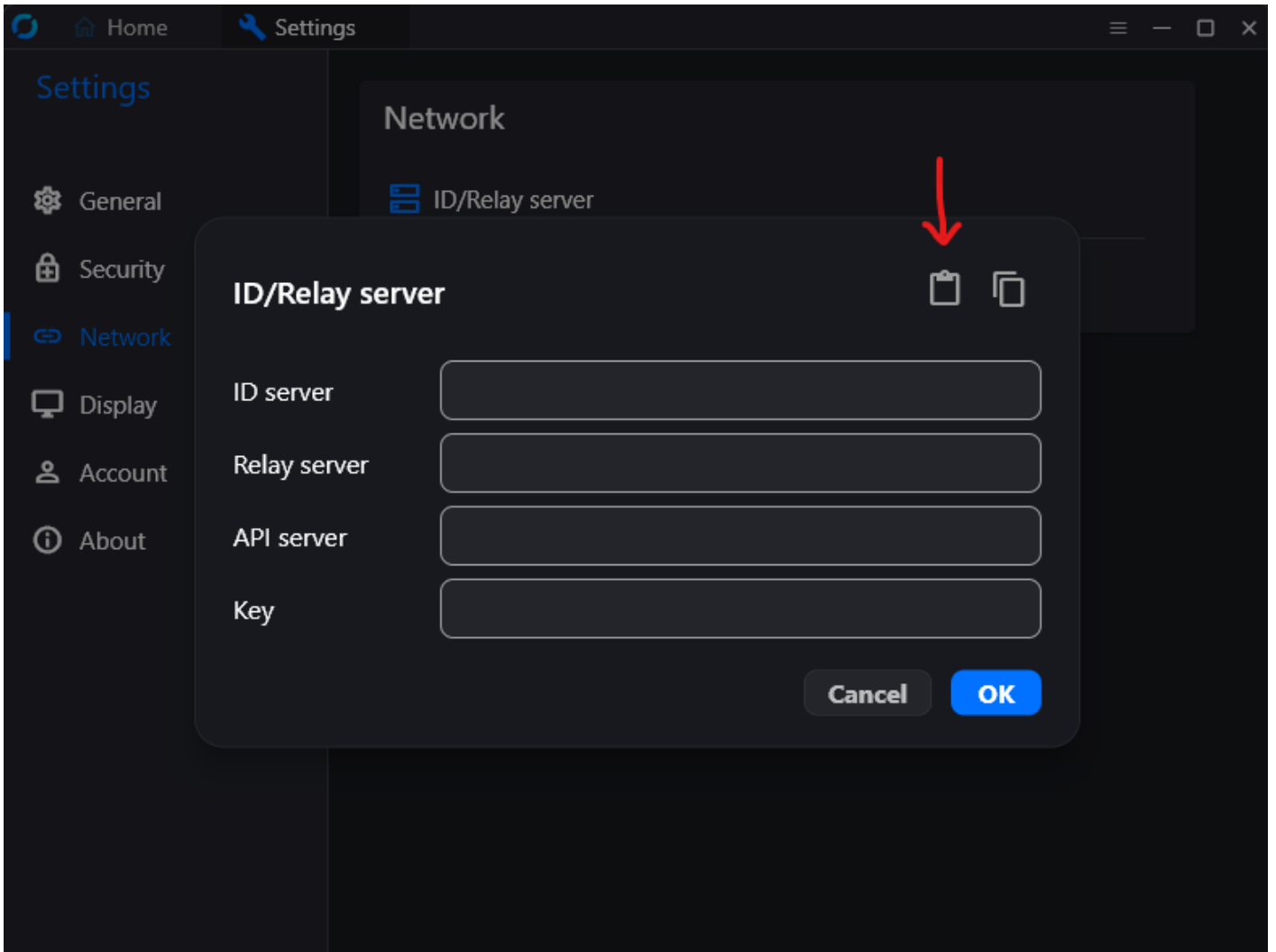


Step 5

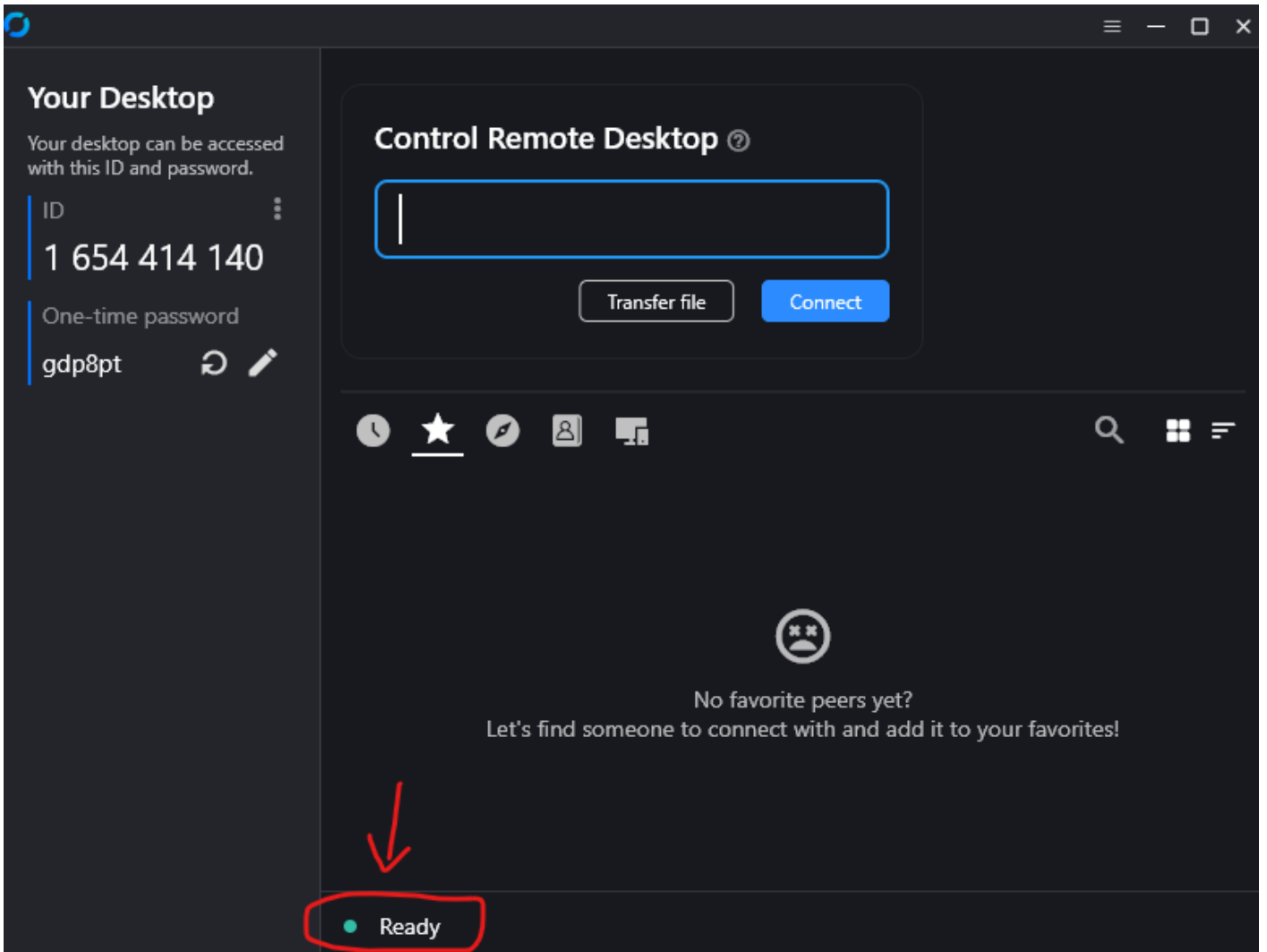
Copy the text below and paste it at the below button where the red arrow show.

RustDesk Key

```
9JiI6ISeltnIsIiI6ISawFmIsISbhVmc0NnLl12bo5WZlJ3Zus2clRGdzVnciojI5FGblJnIsISbhVmc0NnLl12bo5WZlJ3Zus2clRGdzVnciojI0N3boJye
```



Windows client check server connection.



You are ready.

Android guide setup.

Step 1

RustDesk

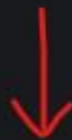
Download new version

Remote ID



No favorite peers yet?

Let's find someone to connect with and add it to your favorites!



Connection



Chat

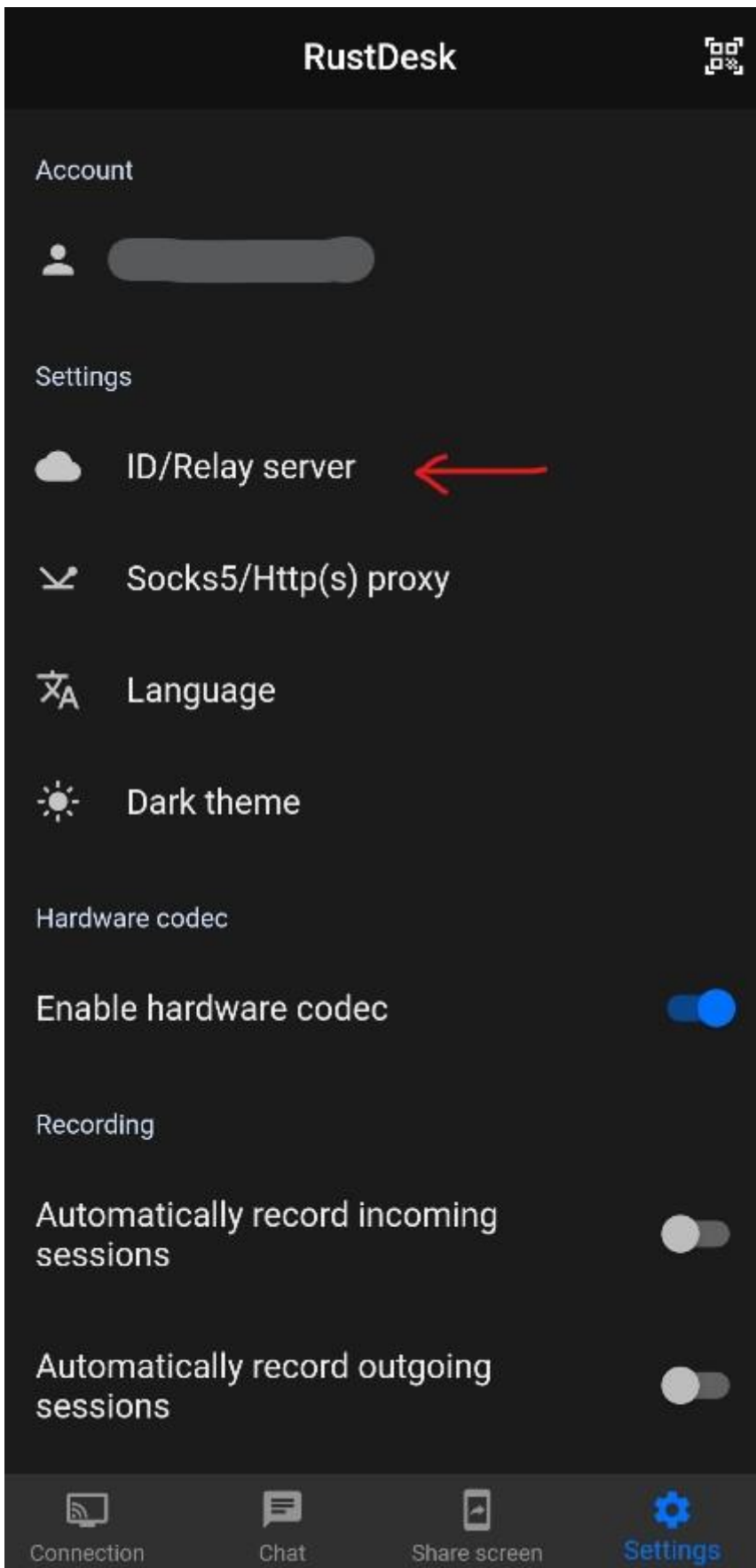


Share screen



Settings

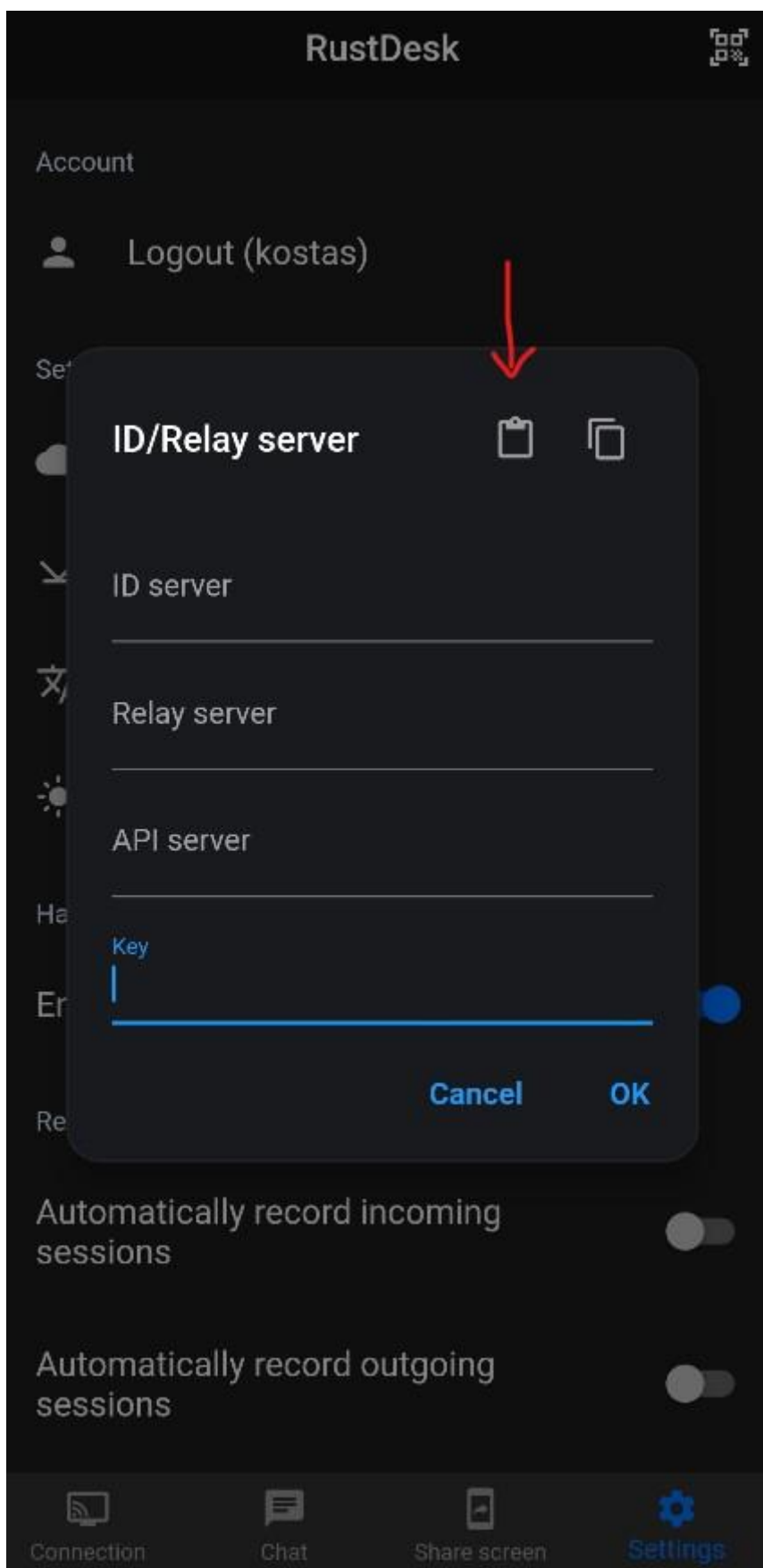
Step 2



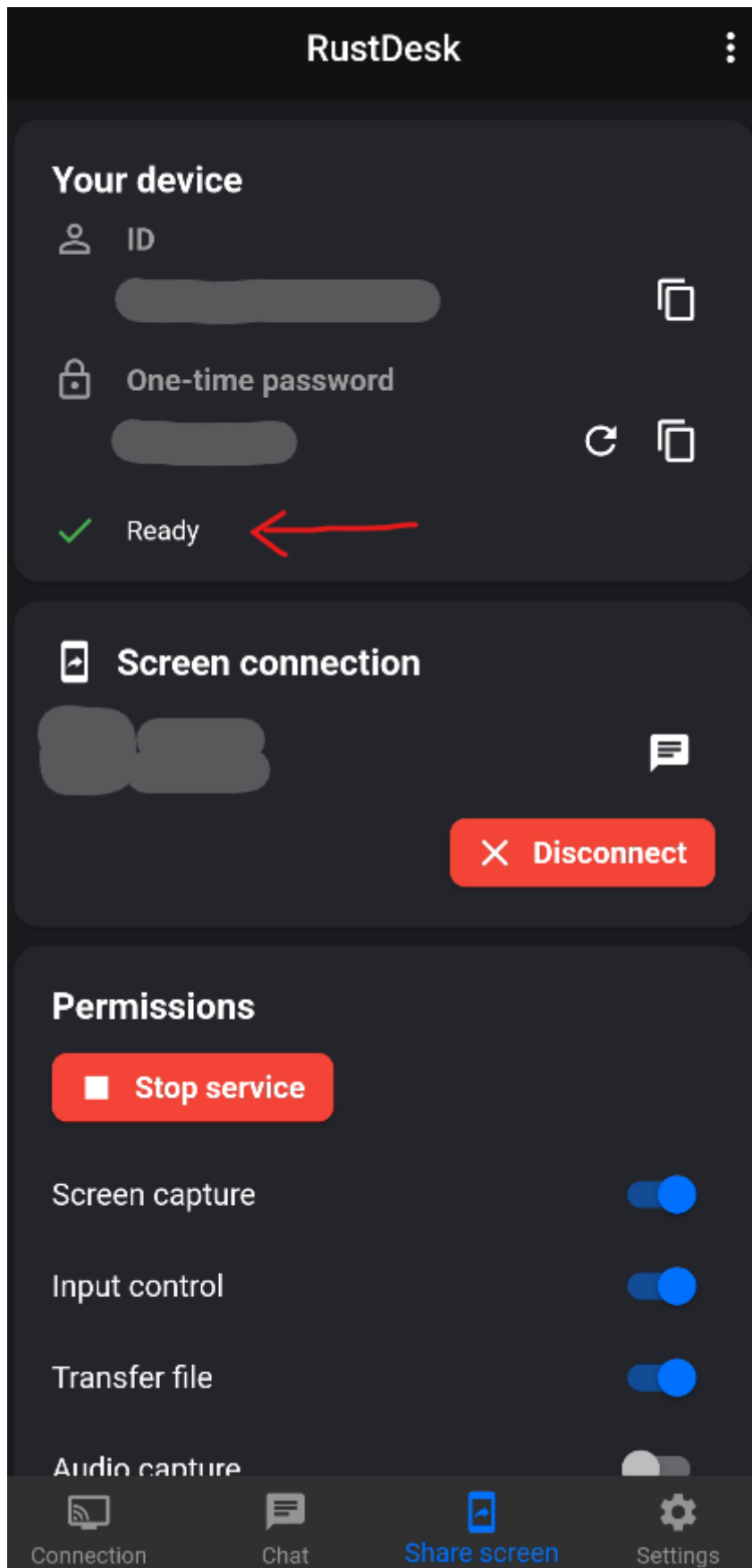
Step 3

Copy the text below and paste it at the below button where the red arrow show.

9JiI6ISeltmIsIiI6ISawFmIsISbhVmc0NnLl12bo5WZlJ3Zus2clRGdzVnciojI5FGblJnIsISbhVmc0NnLl12bo5WZlJ3Zus2clRGdzVnciojI0N3boJye



Android client check server connection.



RustDesk ports Allow from local subnet :

For full LAN direct connect (green status), also allow these inbound on target :

- TCP/UDP 21115-21117, 21118-21119 (RustDesk ports).

Use similar PowerShell :

Allow TCP Ports

```
New-NetFirewallRule -DisplayName "RustDesk TCP LAN" -Direction Inbound -LocalPort 21115-21119  
-Protocol TCP -RemoteAddress LocalSubnet -Action Allow
```

Allow UDP Ports

```
New-NetFirewallRule -DisplayName "RustDesk UDP LAN" -Direction Inbound -LocalPort 21115-21119  
-Protocol UDP -RemoteAddress LocalSubnet -Action Allow
```

You are ready.

Revision #26

Created 2025-02-27 18:21:20 EET by Green

Updated 2026-05-05 20:58:42 EEST by Green